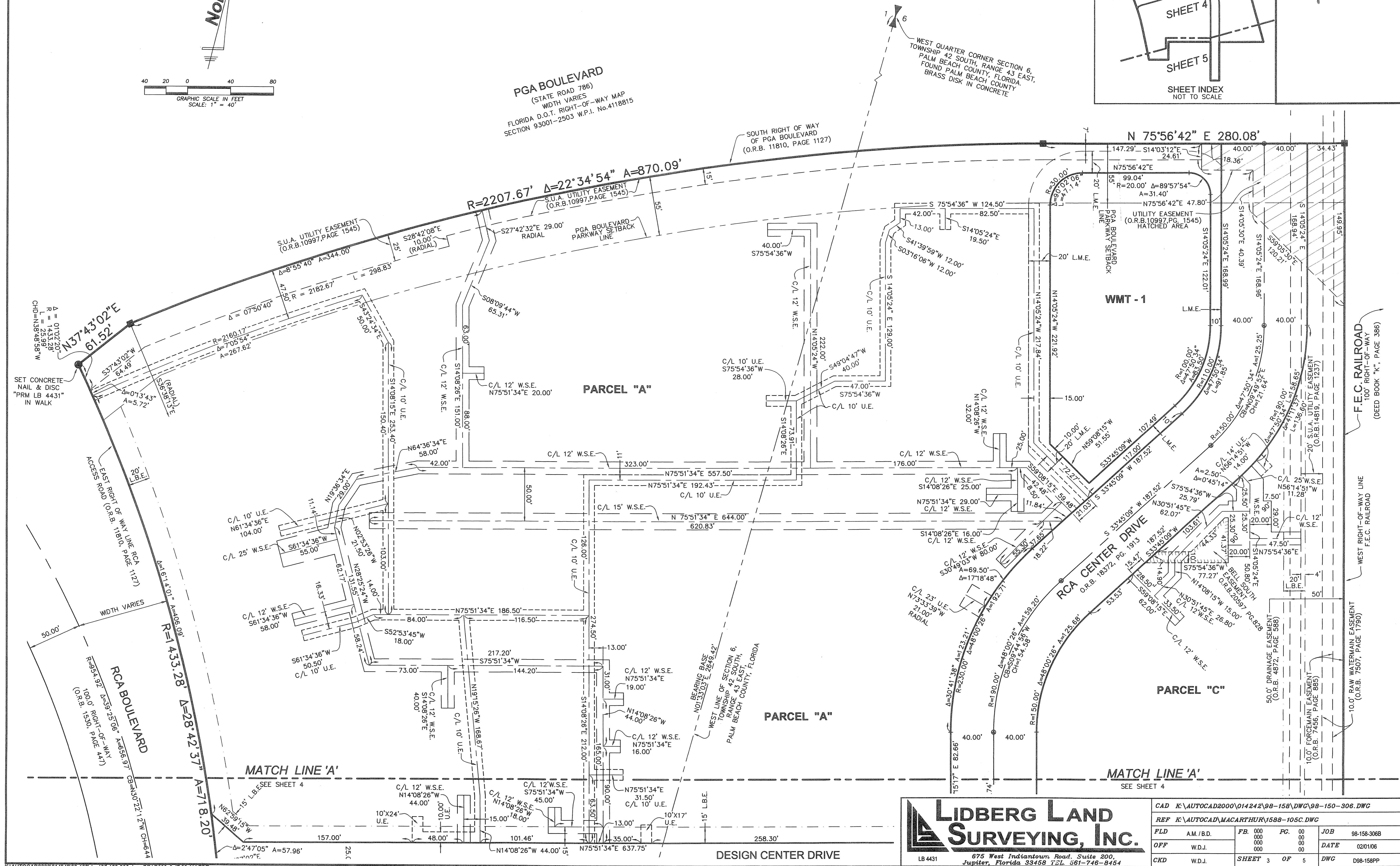
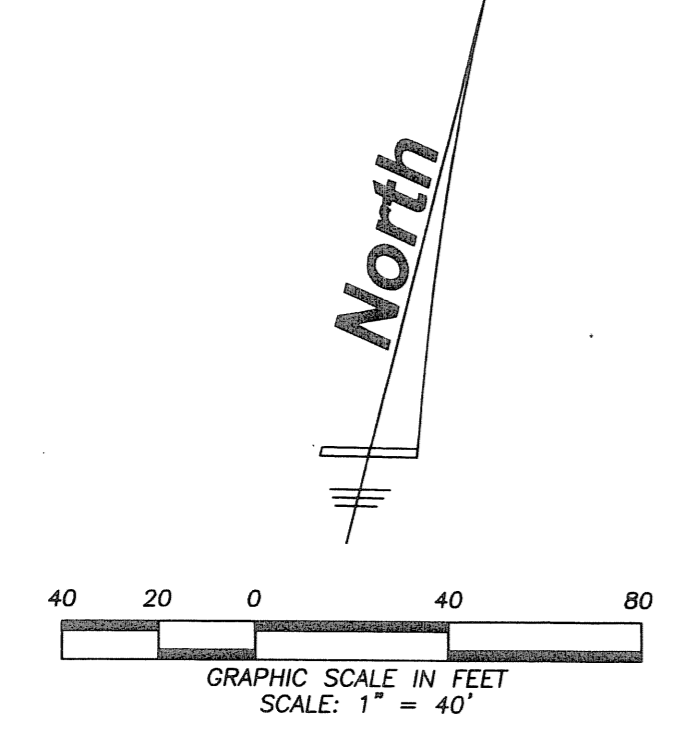
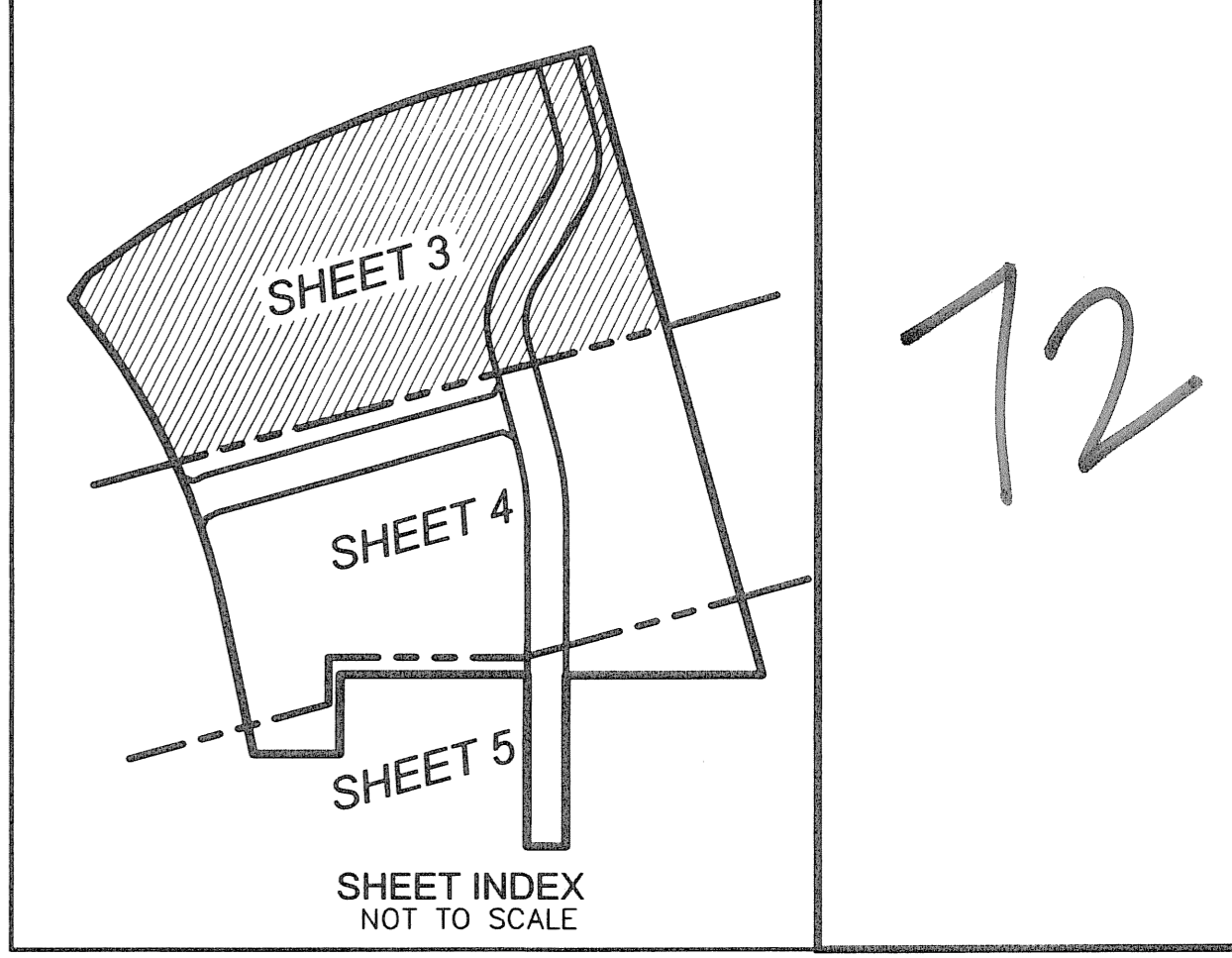


# MACARTHUR PARCEL 5B- REPLAT

BEING A REPLAT OF MACARTHUR PARCEL 5B AS RECORDED IN PLAT BOOK 96, PAGES 79 - 80, PUBLIC RECORDS OF PALM BEACH COUNTY, FLORIDA; LYING IN SECTION 1, TOWNSHIP 42 SOUTH, RANGE 42 EAST AND SECTION 6, TOWNSHIP 42 SOUTH, RANGE 43 EAST, CITY OF PALM BEACH GARDENS, PALM BEACH COUNTY, FLORIDA  
 JULY, 2006 SHEET 3 OF 5



**LIDBERG LAND SURVEYING, INC.**  
 675 West Indiantown Road, Suite 200, Jupiter, Florida 33458 TEL 561-746-8454

CAD K:\AUTOCAD2000\014242\98-158\DWG\98-150-306.DWG			
REF K:\AUTOCAD\MACARTHUR\1588-105C.DWG			
FLD	AM./B.D.	FB. 000	PC. 000
		000	000
OFF	W.D.J.	000	000
		000	000
CKD	W.D.J.	SHEET 3	OF 5
		DATE	02/01/06
		DWG	D98-158PP